

Identifying spare parts

In order to keep the processing time for your spare parts request as short as possible, we need your cooperation in identifying the components.

The following is a description of the process chain for identifying components based on diagram, technical assembly drawings and parts lists.

Alternatively: send us a detailed description of the fault with pictures of the affected components so that our After Sales Team can offer you the suitable spare parts.

*We require the following for the machine with commission no.: **x.xxxx** / project number.: **P100xxx** the following spare part:*

*Item no.: 0029323
Quantity: 1
Designation: O-ring 085x05 FPM70 Viton/black
Drawing position: 6.10 - 28*

Send your spare parts request as described above to spareparts@hedrich.com
The After Sales Team will take care of your request.

Step 1:

Find the commission number/project number*, diagram, and parts lists in the operating manual for your machine.

*Alternatively, please send us a picture of the nameplate.

This is normally located on the main control cabinet (see example below):



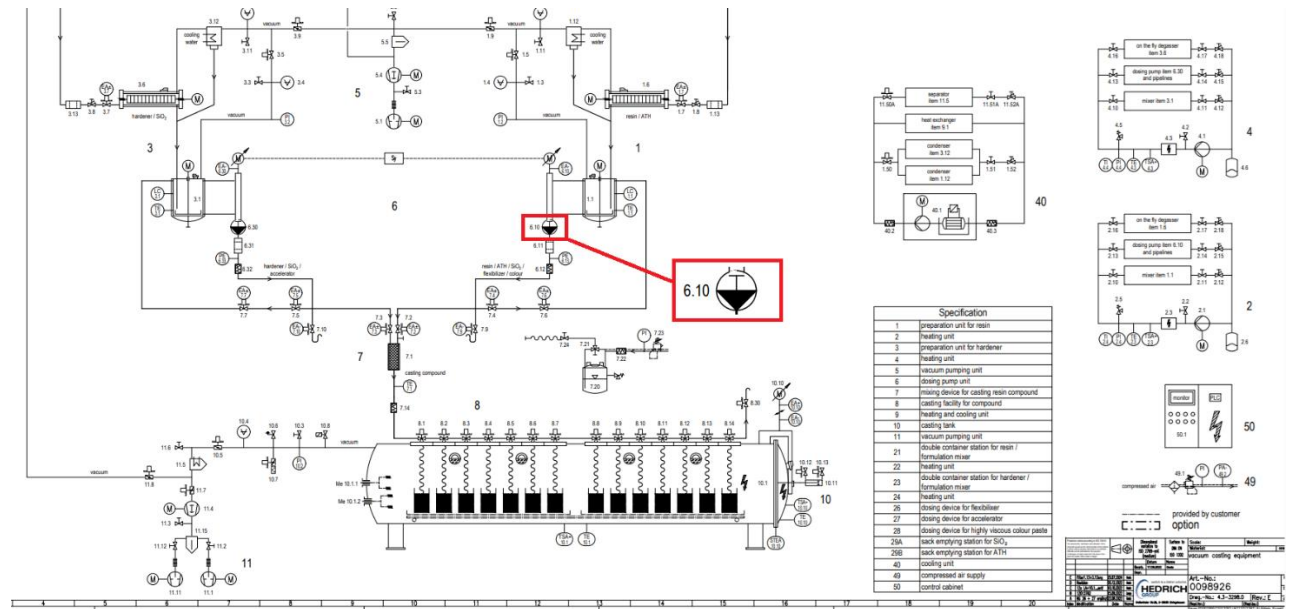
Step 2:

Once the machine has been identified, you must identify the affected component.

2.1 Identify by diagram and parts lists.

Identify the assembly in which the required item is installed so that you can then specify it in the parts list.

Example diagram:



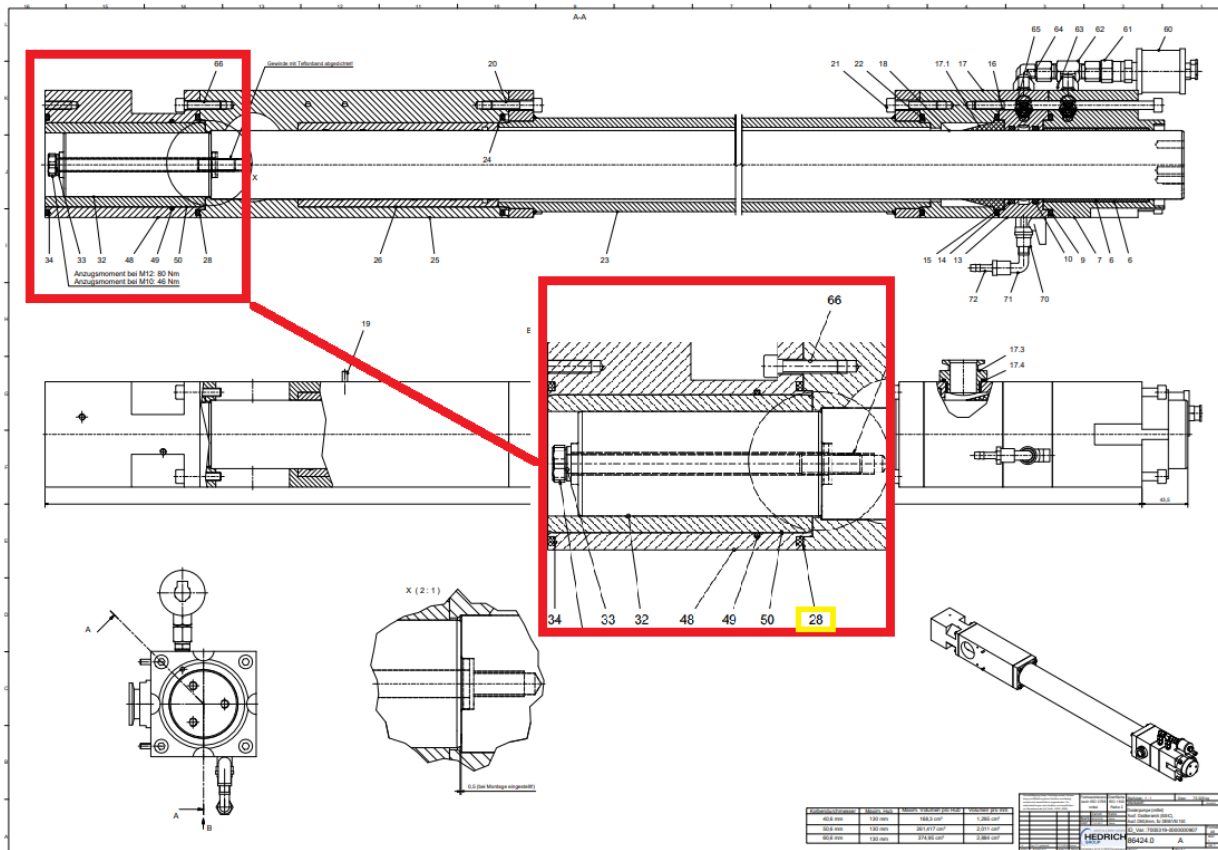
Example parts list:

Item: 06-P1001990			Designation: vacuum casting equipment, assembly group 6			Drawing: 4.3-3298.0			Weight (kg): 0.000				
Created By: Ertl, Miriam			Created On: 10/31/22			Changed By: Wahl, Thomas			Change Date: 5/22/25				
			Remark:			parts list							
Line I.	Item	Quantity	UoM	Designation	Drawing	Draw Pos ..	E	F	A	L	ETL	FV	Weight (kg)
10	0009870	0	piece	*** person dealing with: Lange * date of preparation 14.12.2022									
20	7000319-0000000907	1	piece	dosing pump (medium) design oxyde ceramic (SiSiC)	86424.0	6.10		X	X		X		100.093
30	7000780-0000000902	1	piece	drive for dosing pump (medium)	89364.1	6.10		X	X		X		23.376
40	7000340	1	piece	adaptor for dosing pump (medium)	89313.3	6.10		X	X		X		24.710
50	0047110	2	piece	elbow i/o 90 degree, G1/2, no. 3092, red bronze		6.10	X			X			0.156
60	0039341	2	piece	double thread nipple G1/2-G1/2, brass		6.10	X			X			0.024
70	0087524-0000000903	2	piece	water hose G1/2, pressed, with double-sided sleeve nut, design: 1500 long	89166.3	6.10		X		X	X		1.360
80	0087524-0000000900	1	piece	water hose G1/2, pressed, with double-sided sleeve nut, design: 500 long	89166.3	6.10		X		X	X		0.320
90	0009000	0	piece	=====							X		
100	7000338-0000000901	1	piece	filter and non-return valve for dosing pump (medium) design DN25	89315.1	6.11 / 6.12		X	X		X		31.334
110	0071648	2	piece	elbow i/o 90 degree, G3/8, no. 3092, red bronze		6.11 / 6.12	X			X			1.050
120	0071625	2	piece	double thread nipple G3/8-G1/2		6.11 / 6.12	X			X			0.600
130	0009000	0	piece	=====							X		
140	0092338	1	piece	pressure transformer, piezo-resistive Cerabar PMP 21		PE 6.13	X			X	X		0.200
150	0010287	1	piece	O-ring 018x02,5 FPM70 viton/black		PE 6.13	X			X	X		0.001
160	0009000	0	piece	=====							X		
170	7000319-0000000907	1	piece	dosing pump (medium) design oxyde ceramic (SiSiC)	86424.0	6.30		X	X		X		100.093
180	7000780-0000000902	1	piece	drive for dosing pump (medium)	89364.1	6.30		X	X		X		23.376

2.2 Identification based on drawings and parts lists

Identify the required item by position from the assembly drawing and then specify it in the parts list.

Example drawing position:



Example parts list:

Item: 7000319-0000000907			Drawing: 86424.0		Changed By: 00273		Change Date: 5/22/25		Weight (kg): 77.000				
Line I.	Item	Quantity	UoM	Designation	Drawing	Draw Pos ..	E	F	A	L	ETL	FV	Weight (kg)
200	7000223	1	piece	distance piece for dosing pump (medium), l= 662 mm	89325.3	23	X			X			12.972
210	0029323	1	piece	O-ring 085x05 FPM70 viton/black		24	X			X	X		0.010
220	7000244	1	piece	pump casing for dosing pump (medium) piston d60,6	500799.1	25	X			X			11.050
230	0029237	1	piece	bushing od80 / id65,1 for dosing pump (medium)	59213.3	26		X		X	X		10.300
240	0029323	1	piece	O-ring 085x05 FPM70 viton/black		28	X			X	X		0.010
250	0059970	1	piece	dosing piston D60,6 / SiSiC	59440.4	32	X			X	X		1.300
260	0075430	1	piece	hexagon screw M12x170-8.8 design m, electro-galvanized		33	X			X			0.162
270	0096099	1	piece	Unterleg-/Ausgleichscheibe D12/20x3 Edelstahl 1.4301, Typ GN 6343-NI-12-20-3		33	X			X			0.280
280	0029323	1	piece	O-ring 085x05 FPM70 viton/black		34	X			X	X		0.010
310	0029907	1	piece	dosing casing for oxide ceramic dosing pump (medium), piston D60,6	59220.2	48	X			X	X		12.325
320	0010082	1	piece	O-ring 080x03 FPM70 viton/black		49	X			X	X		0.010
330	0059971	1	piece	dosing bushing SiSiC piston D60,6	59439.4	50	X			X	X		1.100
340	0036293	1	piece	oiler G1/4, d40x40lg., with viton seal with natural glass cylinder, model 75_size 3		60	X			X	X		0.150
350	0053167	1	piece	screw connection for pressure gauge with sealing cone		61	X			X			0.052
360	0073251	1	piece	T-socket order-no. T08LCFX		62	X			X			0.053
370	0073245	2	piece	straight intermediate socket with sealing cone order-no. GZ08LVITCF		63	X			X			0.082
380	0042113	1	piece	elbow screw connection with sealing cone		64	X			X			0.043
390	0073244	2	piece	straight screw-in socket (G1/8A) order-no. GE08LR1/8EDVITOMDCF, viton		65	X			X			0.032
400	0010516	4	piece	hexagon socket head cap screw M08x035-8.8, electro-galvanized		66	X			X			0.076
410	0076439	1	piece	mini ball valve with turning handle G1/8 outside/inside		70	X			X	X		0.035
420	0077118	1	piece	Winkel a/i, G/R 1/8", 150 bar Messing vernickelt, Art.-Nr. N 253.15		71	X			X			0.017
430	0076438	1	piece	screw-in hose nozzle with external thread G1/8 for inside hose diameter 6mm, Ms58		72	X			X			0.016

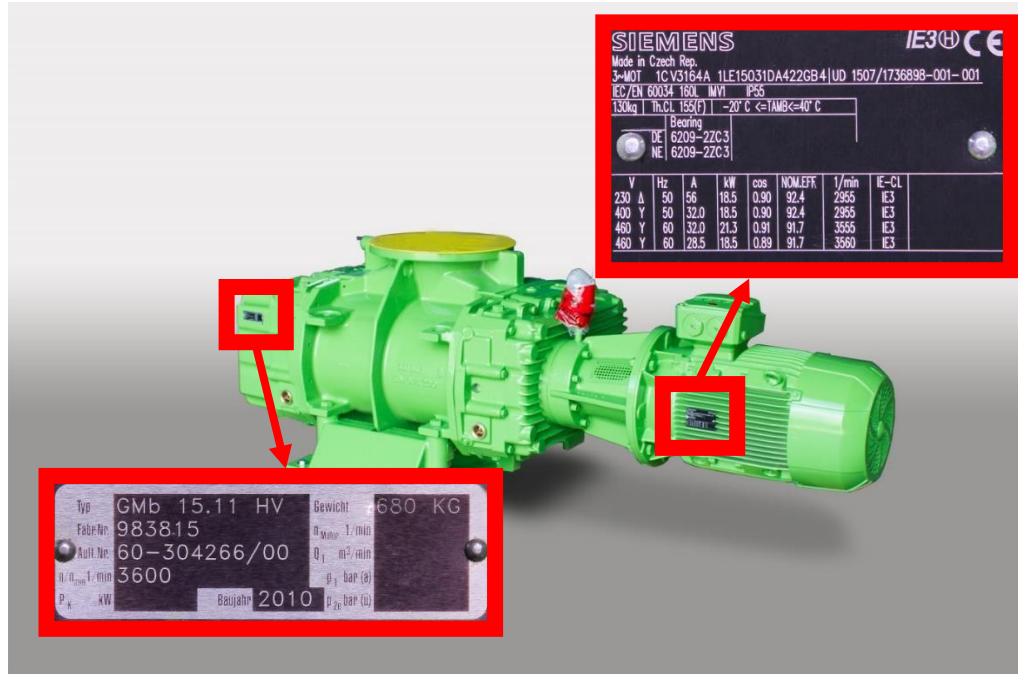
2.3 Identification by nameplate

Subassemblies and purchased parts usually have their own nameplates with serial numbers and manufacturing numbers for the assemblies (see examples below).

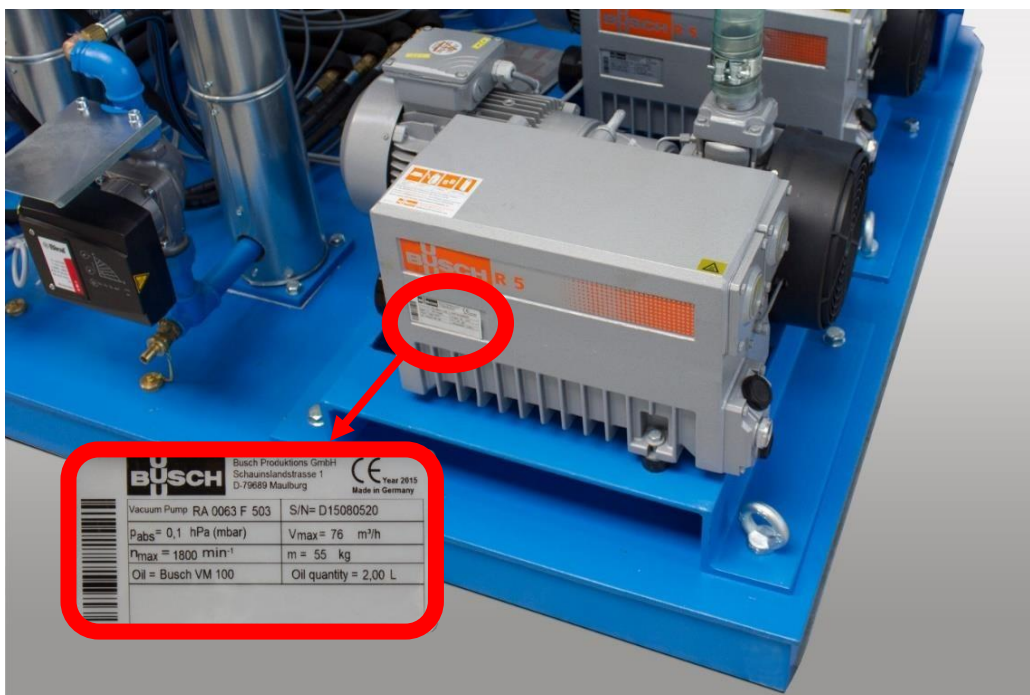
Please also send us all the information on these plates or a picture of the nameplate.

When inquiring about vacuum pumps (replacement pump/sealing kit/bearing kit), always include the nameplate!

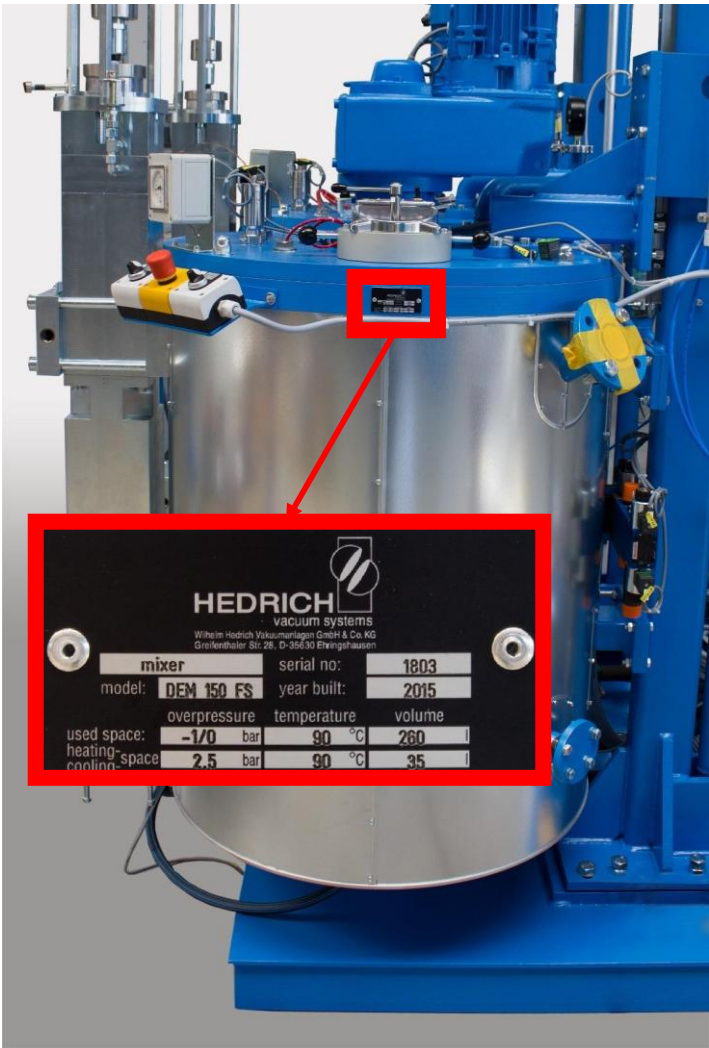
Example: Rotary piston vacuum pump consisting of pump and drive



Example: Rotary vane vacuum pump



Example: HEDRICH vacuum mixer



Example: Hedrich dosing pump

